

Keysight Technologies

*In Situ* Investigations of Corrosion via SPM

Application Note

## Introduction

Move down to line up with measurement line

Metals, minerals, and plastics are all subject to the destructive power of corrosion – affecting billions of dollars of repair and replacement costs per annum. It is not, however, a one-sided battle. Public and private sectors combat corrosion by pouring billions of dollars into research aimed at developing advanced corrosion-resistant materials, corrosion-resistant paints and coatings, and corrosion inhibitors.

Corrosion is an interfacial phenomenon, occurring at solid surfaces in contact with gases or liquids. Although it often has macroscopic consequences, corrosion typically begins at the atomic level. These factors make corrosion processes ideal candidates for study via *in situ* scanning probe microscopy (SPM), a highly sensitive surface technique that can be utilized in the presence of a wide range of corrosive solutions and gases. The versatility of *in situ* SPM enables direct, real-time observation of corrosional processes with atomic or near-atomic resolution, often providing valuable kinetic information as well as important structural data.

The use of *in situ* SPM as a key research tool for studying corrosion has been steadily gaining popularity over the past several years. Researchers have utilized SPM to investigate the structure of a variety of noble metal surfaces (1) and passivated surfaces (2, 3), electrochemical SPM to investigate the rate and mechanism of corrosion, and scanning tunneling microscopy (STM) to investigate the adsorption, orientation, and ordering of corrosion inhibitors on copper and silver surfaces (4). Information about the coverage and adherence of paints and other coatings is also easily accessible via use of these techniques.

Scanning probe microscopes, designed by Keysight Technologies, Inc., are uniquely suited to the *in situ* investigation of corrosion, providing a number of features designed specifically for these studies. For instance, Keysight's specially engineered electrochemical cell has a large volume-to-surface area ratio. The open design of the cell accommodates a large ring counter electrode, thus ensuring uniform distribution of current. Furthermore, removal of precipitates and gas bubbles can be accomplished by exchanging the solution in the cell without disrupting the experiment. Additionally, the Keysight environmental chamber can be used to control the amount of dissolved oxygen in the electrolyte or to introduce reactive gases. These features, combined with easy optical access, precision temperature control plates, and a truly modular design, make Keysight SPM systems an ideal choice for corrosion studies.

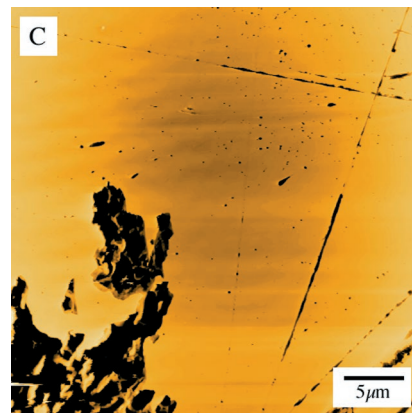
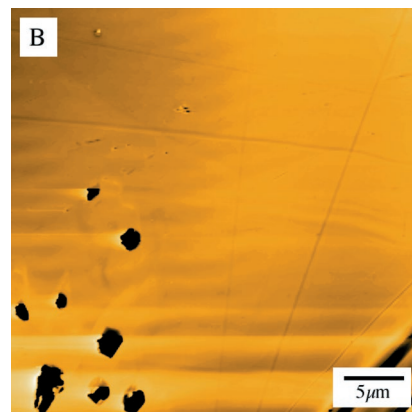
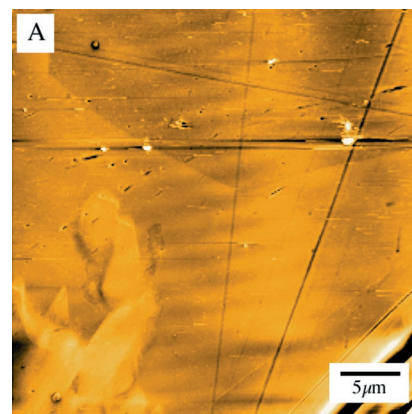
This application note describes three specific examples in which SPM has been used to study various aspects of metallic corrosion. More information about studies of corrosion using SPM can be found on Keysight's website or by contacting Keysight directly.

## Corrosion of Steel

A study was conducted to investigate the effects of a sodium chloride solution on 304 stainless steel. In preparation, the sample was cut from a 304ss rod, polished to a roughness of less than 30 nm over the entire surface, and immersed in deionized water for 20 minutes. The sample was transferred to a scanning probe microscope cell and studied.

Add "(" around letter for ex. Figure 1(A)

Figure 1A shows an image of the stainless steel surface after immersion into 100 mM NaCl in purified, distilled water. The large inclusion in the bottom-left corner of the image was most likely a result of the polishing process. The sample was continually monitored while being held at open circuit in the corrosive solution. Images at 30 minutes (Figure 1B) and 150 minutes (Figure 1C) show the rapid dissolution of the inclusion and the corrosion of the surrounding stainless steel, suggesting that corrosion proceeds through a pitting mechanism.



## Selective Dissolution of Aluminum

The tip-induced, selective dissolution of an aluminum foil is shown in Figure 2. The aluminum sample was imaged in 100 mM NaCl at high contact force, causing the formation of a recessed region. The dissolution mechanism is not simply rubbing away of the top layers of aluminum as one might assume from the image, as evidenced by the fact that the dissolution does not occur in the absence of chloride. Instead, the mechanism is thought to be a two-step process in which the passivating layer is first broken and then the chloride ions react with the underlying aluminum (5). Such experiments may represent a convenient method for studying the stability and strength of passivating coatings.

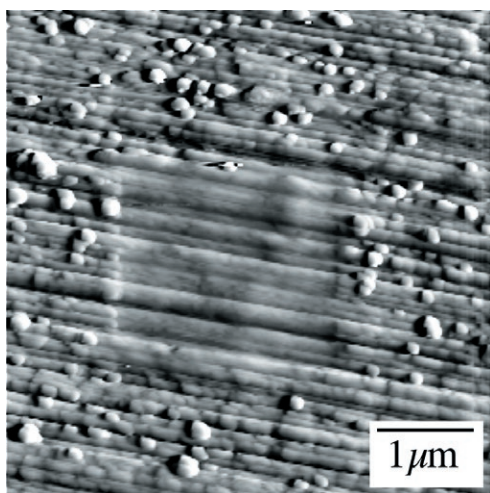


Figure 2. AFM image of the selective dissolution of aluminum in sodium chloride solution. The recessed region in the center of the image had been previously scanned at high force, accelerating the aluminum corrosion. Z range = 1 nm.

Figure 1. AFM images of the corrosion of 304 stainless steel in sodium chloride solution after (A) 4 minutes (z range = 50 nm), (B) 30 minutes (z range = 250 nm), and (C) 150 minutes (z range = 500 nm). Images courtesy of David Uhl, Arizona State University.

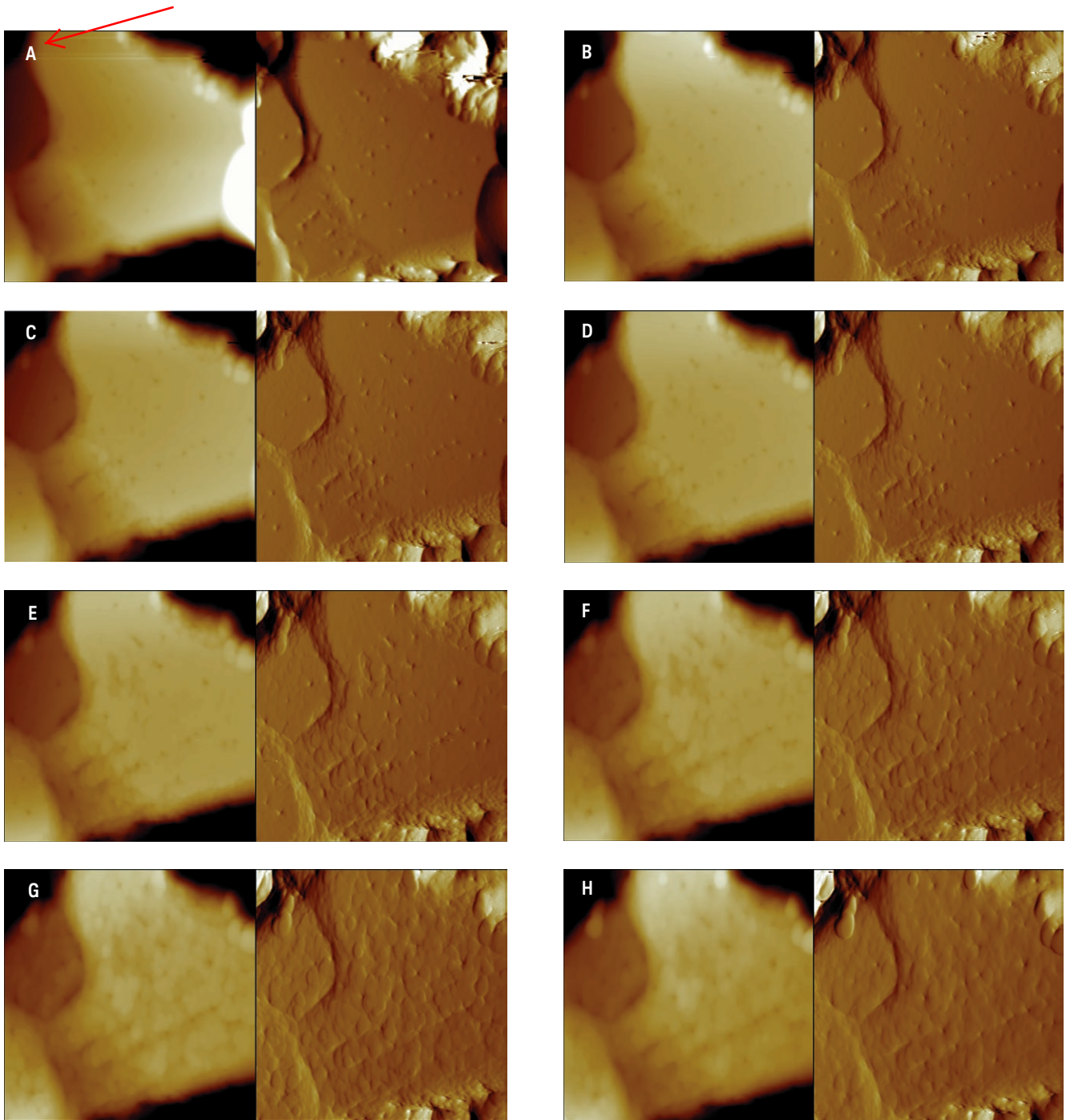


Figure 3. AFM height (left) and deflection (right) images of the corrosion of aluminum in 100 mM sulfuric acid after (A) 0 minutes, (B) 5.5 minutes, (C) 8 minutes, (D) 11 minutes, (E) 16 minutes, (F) 21.5 minutes, (G) 27 minutes, and (H) 43 minutes. Z range for height = 175 nm. Z range for deflection = 5 nm.

## Kinetics of Aluminum Corrosion

Figure 3 shows a sequence of images for the dissolution of an aluminum thin film in 100 mM sulfuric acid. In the preparation of the substrate, aluminum (99.999%, Puratronic) was deposited using <sup>Joan</sup> into mica in vacuum (base pressure =  $5 \times 10^{-9}$ ). Imaging began immediately upon addition of 100 mM H<sub>2</sub>SO<sub>4</sub> to the electrochemical cell; no efforts were made to eliminate oxygen from the electrolyte. The corrosion rate at open circuit was slow enough to capture a long image series that demonstrates the kinetics of aluminum corrosion, which proceeds through an apparent step dissolution process within terraces as well as at step sites and defects. Future studies will concentrate on the effects of corrosion inhibitors on the dissolution process.

Joan should this be  
superscript?

No, it is fine the way it is  
Joan

## References

1. Tao N.J., Pan J., Li Y., Oden P.I., DeRose J.A., Lindsay S.M., Surf. Sci., (1992), **272**, L338.
2. Maurice V., Yang W.P., Marcus P., J. Electrochem. Soc., (1994), **141**, 3016.
3. Maurice V., Talah H., Marcus P., Surf. Sci., (1993), **304**, 98.
4. Ge M., Zhong B., Klemperer W.G., Gewirth, A.A., J. Am. Chem. Soc., (1996), **118**, 5812.
5. Rouè L., Chen L., Guay D., Langmuir, (1996), **12**, 5818.

### AFM Instrumentation from Keysight Technologies

Keysight Technologies offers high-precision, modular AFM solutions for research, industry, and education. Exceptional worldwide support is provided by experienced application scientists and technical service personnel. Keysight's leading-edge R&D laboratories are dedicated to the timely introduction and optimization of innovative and easy-to-use AFM technologies.

[www.keysight.com/find/AFM](http://www.keysight.com/find/AFM)

For more information on Keysight Technologies' products, applications or services, please contact your local Keysight office. The complete list is available at: [www.keysight.com/find/contactus](http://www.keysight.com/find/contactus)

### Americas

Canada	(877) 894 4414
Brazil	55 11 3351 7010
Mexico	001 800 254 2440
United States	(800) 829 4444

### Asia Pacific

Australia	1 800 629 485
China	800 810 0189
Hong Kong	800 938 693
India	1 800 112 929
Japan	0120 (421) 345
Korea	080 769 0800
Malaysia	1 800 888 848
Singapore	1 800 375 8100
Taiwan	0800 047 866
Other AP Countries	(65) 6375 8100

### Europe & Middle East

Austria	0800 001122
Belgium	0800 58580
Finland	0800 523252
France	0805 980333
Germany	0800 6270999
Ireland	1800 832700
Israel	1 809 343051
Italy	800 599100
Luxembourg	+32 800 58580
Netherlands	0800 0233200
Russia	8800 5009286
Spain	800 000154
Sweden	0200 882255
Switzerland	0800 805353
	Opt. 1 (DE)
	Opt. 2 (FR)
	Opt. 3 (IT)
United Kingdom	0800 0260637

For other unlisted countries:  
[www.keysight.com/find/contactus](http://www.keysight.com/find/contactus)

(BP-09-23-14)

This information is subject to change without notice.  
© Keysight Technologies, 2007 - 2014  
Published in USA, July 31, 2014  
5989-6895EN  
[www.keysight.com](http://www.keysight.com)